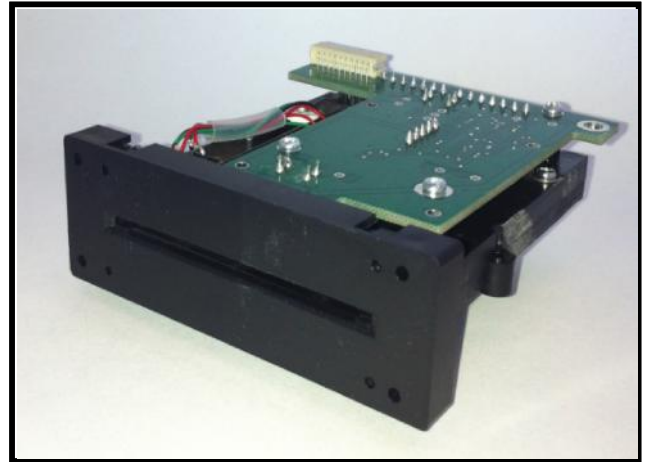


Partial Insertion Magstripe Reader

Features

- Bit/Strobe interface
- StatGuard™ static protection
- Front and rear card detects
- Jam proof card detect mech
- Open slot architecture
- Easily serviced while installed
- Reads ISO track1, track2 or both
- Designed for casino environment
- One year warranty

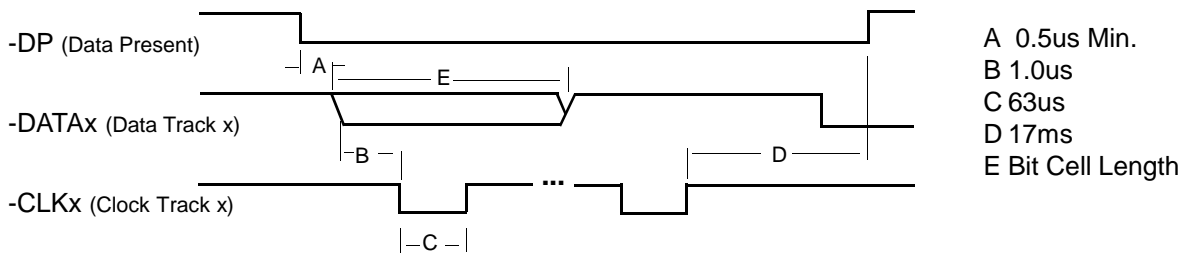


Model PI 60N-120-BST-MFR

Specifications

Interface:	Bit/Strobe Single and Dual track
Read Direction:	Insertion and/or withdrawal
Tracks:	60% of ISO Track 1 (100) or Track 2 (020)
Read Speed:	3ips - 45ips
Card Thickness:	10mils - 45mils
Connector:	1 x 7 7 pin (Single track) 1x10 10 pin (Dual track)
Dimensions:	Length: 3.5in. Width: 4.0in. Height: 1.4in. approx.
MTBF:	Electronics: 100,000 hours Head Life: 500,000 minimum
Environment:	Operating Temp.: 0°C - 50°C Storage Temp.: -20°C - 70°C Operating Humidity: 8%-95% Storage Humidity: 5% -95%

Timing Diagram



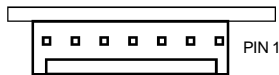
Model PI 60N-120-BST

Model PI60N-120-BST is a partial insertion card reader with a bit/strobe interface designed as a replacement card reader for use in player tracking systems. Antistatic features are used to insure the uninterrupted operation of the reader in casino environments, where static discharge can be problematic. The reader uses an innovative ball activated mechanism and optical sensor combination for front and rear card detects that insure that they can never be damaged or jam. Punched cards are impossible to snag. The reader comes with XS Technology's standard one year warranty.

Pin Assignment

Single Track 1 or 2

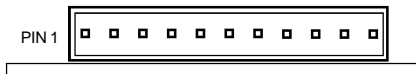
1x7 7pin



PIN	SIGNAL
1	+V
2	-DATA Data bit Lo = Logic 1
3	-CLK Clock LO data valid
4	-DP Data present
5	-FCD Front card detect
6	-RCD Rear card detect
7	GND

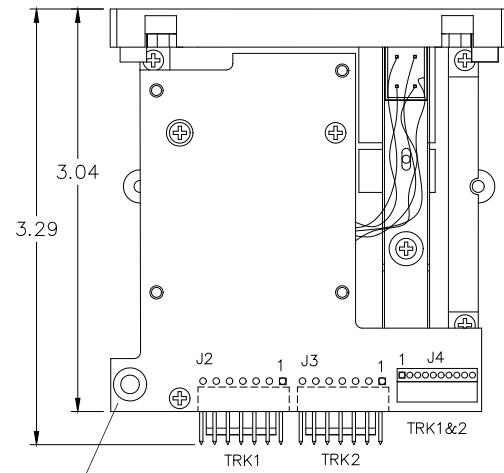
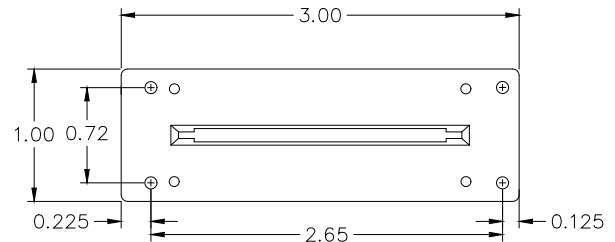
Dual Track 1and 2

1x10 10pin



PIN	SIGNAL
1	+V
2	-DATA2 Data bit Lo = Logic 1
3	-CLK2 Clock LO data valid
4	-DATA1 Data bit Lo = Logic 1
5	-CLK1 Clock LO data valid
6	-DP Data present
7	(N/C)
8	-FCD Front card detect
9	-RCD Rear card detect
10	GND

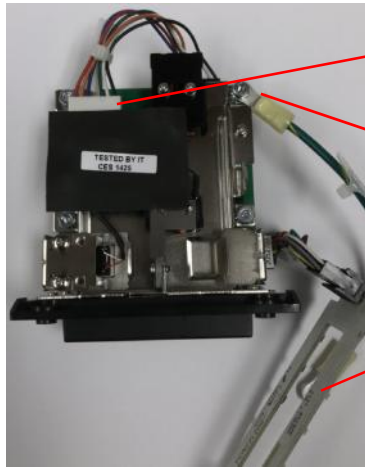
Dimensions



EARTH GROUND CONNECTION

Power Requirements

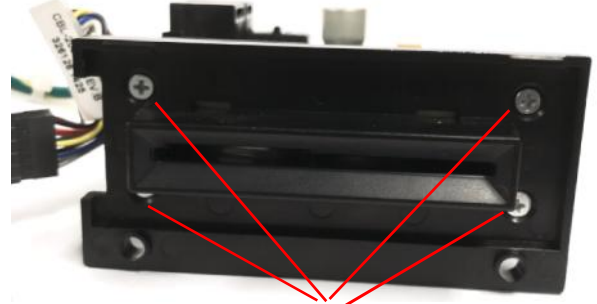
Voltage:	5.5V DC max. 3.0V DC min.
Current Reader:	13.0mA @ 5.0V DC 7.0 mA @ 3.0V DC



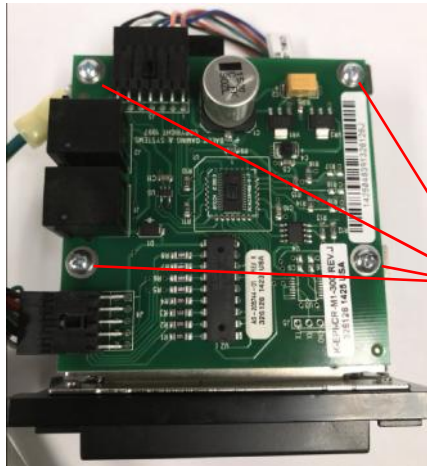
(1) Unplug cable to reader electronics.

(2) Disconnect ground wire and save mounting hardware.

(3) Remove LED assembly from bezel.



(4) Remove 4 screws from bezel.



(5) Remove 4 screws from controller board assembly.

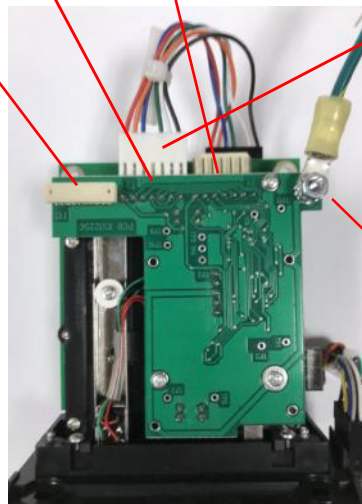


(6) Mount bezel to new reader using 4 Hi-LO screws supplied.



(7) Mount the controller board assembly to new reader using 2 Hi-LO screws supplied.

TRACKS 1&2, TRACK 2, TRACK 1



(8) Plug in the cable from the controller board to reader electronics. Select the receptacle for the system's track configuration.

(9) Attach ground wire to reader electronics board assembly using the saved mounting hardware.

INSTALLING PI60N-1/2/12-BST-MFR READER